

## SUBMITTAL REVIEW

**Project No.:**  
20-059

**Submittal Review No.:**  
SX-023

**Project:**  
BMO The Beach  
2183 Queen St. E  
Toronto, ON

**Submittal Review Title:**  
Automatic Door Operators

**Date:**  
April 22, 2021

**Attention:**  
Shauna Nichol  
CCSL Group Inc.  
575 Westney Road South  
Ajax, ON L1S 4N7

**Pages:**  
6 (incl cover)

**Distribution:**  
Kevin Roberts, BMO CRE

REF. No.	Item	Status
SX023	A – Div 8 – Automatic Door Operators	Reviewed as noted

### Comments:

1.0 Refer to comments on submittal.

Issued by Kearns Mancini Architects Inc.

Ceric Druetta,  
Project Lead

name and title of person signing



signature

April 22, 2021

date



**TRANSMITTAL**

<b>Project Name:</b>	BMO Beachlands	<b>Date of Submittal:</b>	April 8, 2021
<b>Project Address:</b>	2183 Queen St. E Toronto	<b>Shop Drawing Category:</b>	Division 8
<b>CCSL Project No. :</b>	305572	<b>Vendor Company Name:</b>	Record

To: *KMAI, Cedric Druetta*  
From: Samantha Tuba

Sent By: Email   
 Courier   
 Hand   
 Fax   
 Fax No. \_\_\_\_\_

Item: **Shop Drawing** - Automatic Door Operators

Good day

Please find enclosed, shop drawings prepared for the noted project above. Please review/ approve at your earliest convenience.

Best Regards,

**Samantha Tuba** | Project Coordinator  
**CCSL Group Inc.**  
 575 Westney Road South | Ajax, ON L1S 4N7  
 T: 416 291 8644 | 800 996 6025 Ext. 246  
 F: 416 291 7463 | 800 206 7308  
 E: [samantha.tuba@ccslgroup.com](mailto:samantha.tuba@ccslgroup.com)  
 W: [www.ccslgroup.com](http://www.ccslgroup.com)

On Behalf of

**Shauna Nichol, GSC** | Senior Manager, PMO  
**CCSL Group Inc.**  
 575 Westney Road South | Ajax, ON L1S 4N7  
 T: 416 291 8644 | 800 996 6025 Ext. 245  
 F: 416 291 7463 | 800 206 7308  
 C: 416 569 0334  
 E: [Shauna.Nichol@ccslgroup.com](mailto:Shauna.Nichol@ccslgroup.com)  
 W: [www.ccslgroup.com](http://www.ccslgroup.com)

<b>SHOP DRAWING REVIEW</b>	
REVIEWED	<input checked="" type="checkbox"/>
REVIEWED AS NOTED	<input type="checkbox"/>
REVISE AND RESUBMIT	<input type="checkbox"/>
NOT REVIEWED	<input type="checkbox"/>
Date:	April 8, 2021
Reviewed By:	S. Nichol

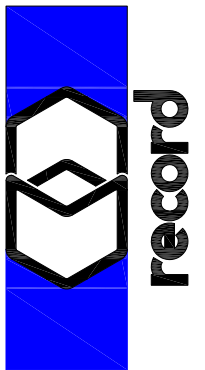


# record automatic doors, inc

your global partner for entrance solutions

1016 Sutton Drive  
Unit C10  
Burlington, ON L7L 6B8  
T: 905-632-2235  
T: 855-777-2235  
F: 905-632-4620

**record  
automatic  
doors, inc**



COVER SHEET  
GENERAL & PROJECT INFORMATION

## -PROJECT NOTES-

- UNIT MFR AND TYPE:
  - RECORD-USA SERIES 6100 SWING DOOR OPERATOR
- UNIT FINISH:
  - CLEAR [CLASS II] ANODIZED FINISH
- UNIT MODEL AND CONFIGURATION:
  - 6105 : RH
    - #D31
  - 6104 : LH
    - #D29; D30
  - 6100 : RHR
    - #D10
- HEADER SIZE:
  - 5" x 4-1/2" SIDE LOAD HEADER
    - 41-1/2" HEADER LENGTH (FOR 38" DOOR OPENING)
- ACTIVATION:
  - BORDTEK WASHROOM KIT [BWC01-KIT-CDN]
    - BWC01-EXT-SW-01: EXTERIOR SWITCH
    - BWC01-EXT-SW-SIGN-CDN-01: SIGN FOR EXTERIOR SWITCH
    - BWC01-INT-SW-01: INTERIOR SWITCH
    - BWC01-INT-SW-SIGN-CDN-01: SIGN FOR INTERIOR SWITCH
    - BWC01-RFA-SW-CDN-01: REQUEST FOR ASSISTANCE BUTTON
    - BWC01-RFA-SIGN-CDN-01: REQUEST FOR ASSISTANCE SIGN
    - BWC01-RFA-AL-CDN-01: REQUEST FOR ASSISTANCE ALARM
    - BWC01-AUTO-LOCK-SIGN-CDN-01: AUTO LOCK SIGN
    - BWC01-01: CONTROL
    - DC01: DOOR CLOSE MAGNETIC SWITCH
      - #D31
  - BORDTEK WASHROOM KIT [BWC01-KIT-CDN]; W/O EMERGENCY ASSIST
    - BWC01-EXT-SW-01: EXTERIOR SWITCH
    - BWC01-EXT-SW-SIGN-CDN-01: SIGN FOR EXTERIOR SWITCH
    - BWC01-INT-SW-01: INTERIOR SWITCH
    - BWC01-INT-SW-SIGN-CDN-01: SIGN FOR INTERIOR SWITCH
    - BWC01-AUTO-LOCK-SIGN-CDN-01: AUTO LOCK SIGN
    - BWC01-01: CONTROL
    - DC01: DOOR CLOSE MAGNETIC SWITCH
      - #D29; D30
  - BORDTEK INTERIOR ACTIVATION SWITCH
    - BWC01-INT-SW-01: INTERIOR SWITCH [EGRESS ACTIVATION]
    - BWC01-INT-SW-SIGN-CDN-01: SIGN FOR INTERIOR SWITCH
    - KEYPAD FOR EXTERIOR ACTIVATION (BY OTHERS)
      - #D10
- MODE SELECTION:
  - THREE-WAY ROCKER SWITCH
    - AUTO (ON) / OFF / OPEN (HOLD OPEN) MODES
    - MOUNTED IN OPERATOR HEADER END CAP

### KEARNS MANCINI ARCHITECTS INC

REVIEWED  
REVIEWED AS NOTED  
REVISE AND RESUBMIT  
NOT REVIEWED



Date: 2021.04.09

Submittal No.: SX-023

Reviewed by: CEDRIC DRUETTA

This review by KEARNS MANCINI ARCHITECTS INC is for the sole purpose of ascertaining conformance with the general design concept for architectural features only, and does not in any way constitute review of the design of engineering elements which form part of the contract documents prepared by others. This review shall not mean that KEARNS MANCINI ARCHITECTS INC approves the detailed design inherent in the shop drawings, responsibility for which shall remain with the Contractor submitting same, and such review shall not relieve the Contractor of the responsibility for meeting all requirements of the contract documents. The Contractor is responsible for the dimensions to be confirmed and correlated at the job site, for information that pertains solely to fabrication processes or to techniques of construction and installation, and for coordination of work of all trades.

- ☞ RECORD AUTOMATIC DOORS MAY ALSO BE NOTED AS R.A.D. ON DRAWINGS
- ☞ APPROVAL OF THE SUBMITTED SHOP DWGS REPRESENT A FINAL ACCEPTANCE OF ALL DIMENSIONS, ROUGH OPENINGS, AND UNIT OPTIONS; AS SHOWN ON THE DWGS
- ☞ WHEN THESE DWGS ARE USED BY OTHERS, RECORD AUTOMATIC DOORS ASSUMES NO RESPONSIBILITY FOR ANY CONSEQUENT ERRORS THAT MAY FOLLOW.
- ☞ ALL NOTES AND DIMENSIONS SHOULD BE NOTED FOR REFERENCE; AS RECORD AUTOMATIC DOORS ASSUMES NO RESPONSIBILITY FOR CHANGES AND/OR DISCREPANCIES OF ACTUAL JOB SITE CONDITIONS, AFTER APPROVAL OF SHOP DWGS. ANY REVISIONS REQUESTED/MADE AFTER APPROVED SHOPS ARE SENT BACK TO RECORD AUTOMATIC DOORS MAY BE SUBJECT TO ADDITIONAL CHARGES (MATERIAL, LABOR, ETC.).
- ☞ ANY NOTES TO ANY MATERIALS AND/OR ACTIONS LISTED ON DWGS AS "BY OTHERS", IS FOR REFERENCE ONLY; FOR CLARIFICATION IN REGARDS TO THE WORK PERFORMED AND MATERIALS PROVIDED BY RECORD AUTOMATIC DOORS.
- ☞ ANY NOTE OF "GENERAL SETUP" OR "SETUP SHOWN TYPICAL" (i.e.: WIRING DIAGRAMS) SHOWS INFORMATION FOR REFERENCE ONLY, AND MAY DIFFER FROM ACTUAL JOB SITE CONDITIONS.
- ☞ SIGNED APPROVAL OF RECORD AUTOMATIC DOORS SHOP DWGS WILL NEED TO BE RETURNED TO RECORD AUTOMATIC DOORS BEFORE ANY ORDERING AND/OR FABRICATION OF MATERIALS CAN BEGIN.

## -GENERAL NOTES-

- ALL WIRING (HIGH AND LOW VOLTAGE) RAN TO HEADER OF DOOR UNIT, UNLESS OTHERWISE SPECIFIED, IS BY OTHERS
  - SWING OPERATORS TO HAVE ALL WIRING IN AT LATCH SIDE OF DOOR HEADER.
    - WIRING INTO OPERATOR HEADER AT APPROXIMATELY 3" UP FROM TOP OF DOOR HEADER AND 3" IN FROM DOOR FRAME/CENTER OF DOORS.
- ALL WIRING IS TO BE FINISHED BEFORE R.A.D. INSTALLERS ARRIVE ON SITE.
- ALL GLASS, GLAZING AND CAULKING, UNLESS OTHERWISE SPECIFIED, IS BY OTHERS.
- ROUGH OPENING PREPARATION, UNLESS OTHERWISE SPECIFIED, IS BY OTHERS.
- SWING DOOR OPERATOR HEADERS [HOUSING] WILL HAVE A HEADER LENGTH THAT IS EQUAL TO THE DOOR OPENING WIDTH PLUS 3-1/2".
  - i.e.: A 36" DOOR OPENING WILL HAVE A 39-1/2" HEADER LENGTH.
  - i.e.: A 72" PAIR DOORS OPENING WILL HAVE A 75-1/2" HEADER LENGTH.
  - SINGLE OPERATOR ON A PAIR OF DOORS WILL HAVE A HEADER LENGTH OF THE ACTIVE PANEL OPENING PLUS 3-1/2".
- ANY NOTATION OF "EXTERIOR" IS IN REFERENCE TO DOOR ORIENTATION, TO NOTE OPERATOR & PUSH PLATE LOCATIONS, DOOR SWING, ETC.; AND IS NOT A REFERENCE TO ANY BUILDING OR ROOM AREA, UNLESS THAT NOTATION IS SPECIFICALLY LABELED AS SUCH.
  - i.e.: "EXTERIOR OF BUILDING".

### OPERATOR SWING

**LH [LEFT HAND] =**  
LH PULL, LH INSWING  
**LHR [LEFT HAND REVERSE] =**  
RH PUSH, RH OUTSWING  
**RH [RIGHT HAND] =**  
RH PULL, RH INSWING  
**RHR [RIGHT HAND REVERSE] =**  
LH PUSH, LH OUTSWING

REV:	DATE	INIT	SHEETS

DESCRIPTION:

MANUFACTURER: 2  
MODEL: 2  
FINISH: 2

PROJECT NAME: BMO - BEACHLANDS  
ADDRESS: N/A

SCALE: N/A  
ANSI C  
SIZE: S.A.  
CHECKED BY: SMW

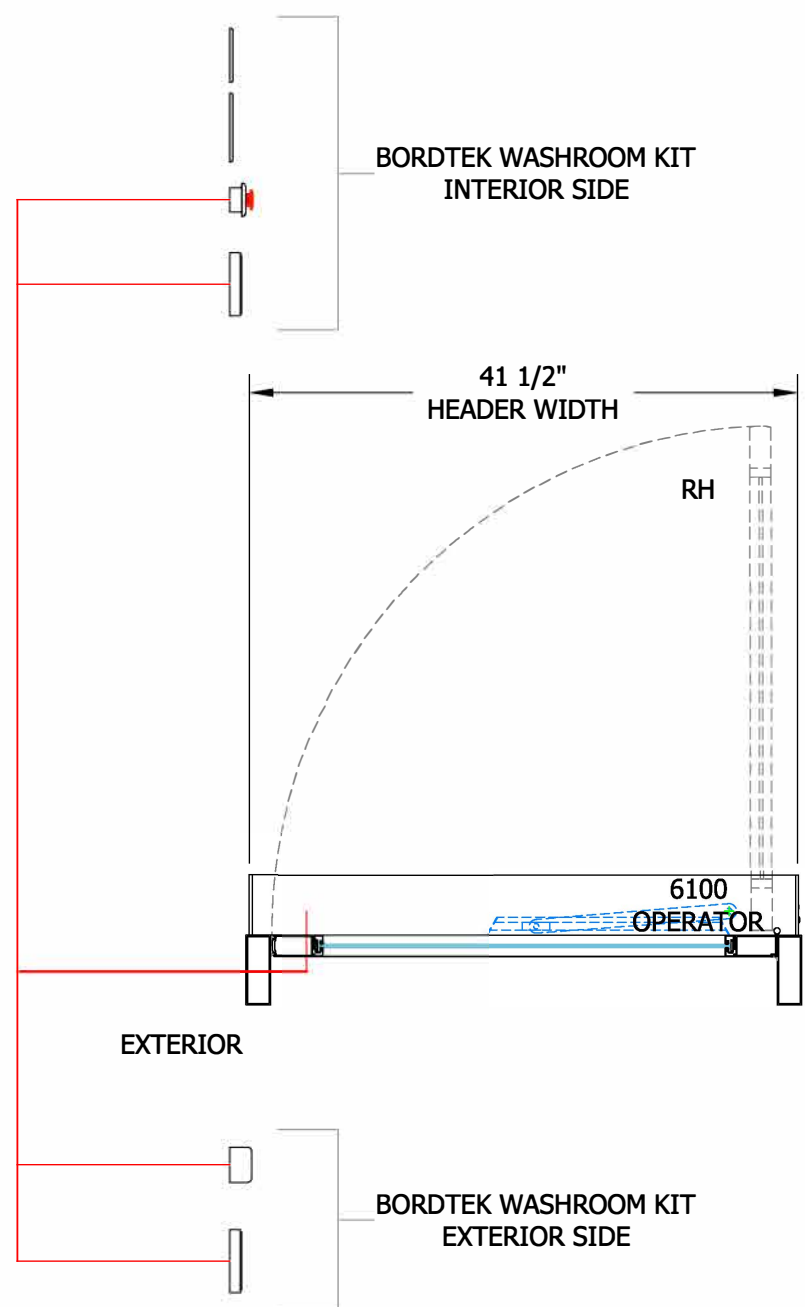
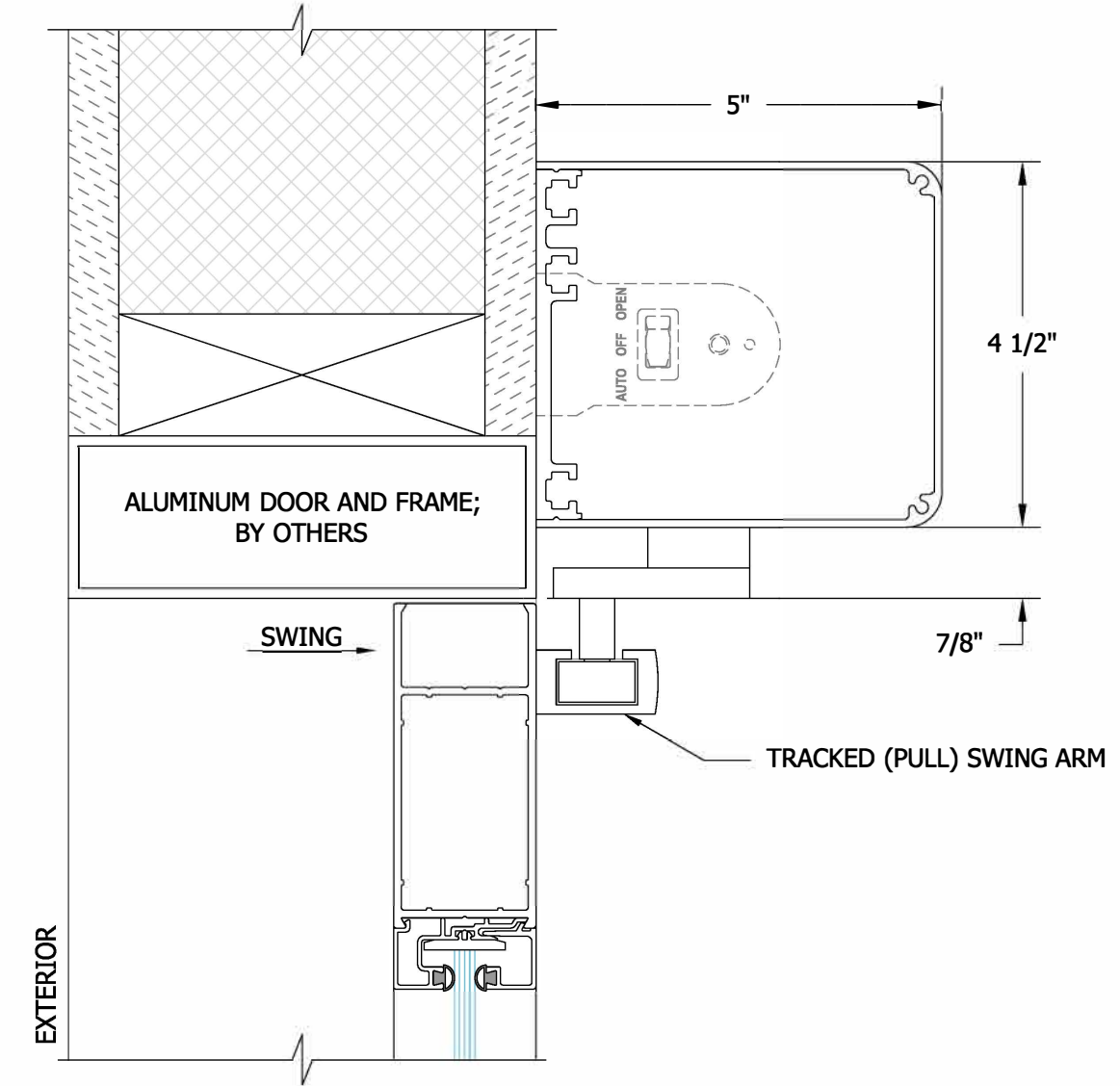
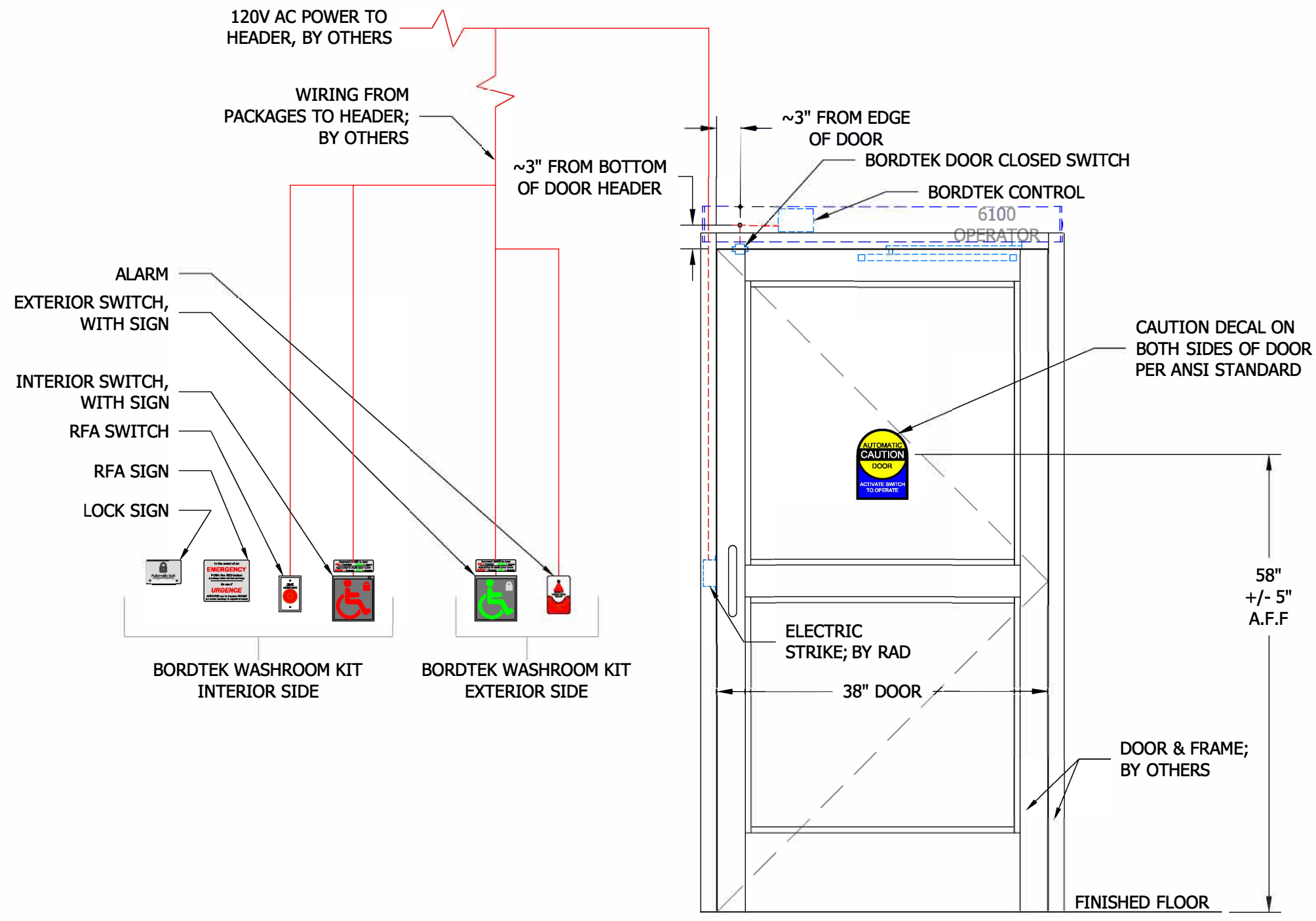
PROJECT NAME: BMO - BEACHLANDS  
ADDRESS: N/A

REVISION DATE: 2  
REVISION: 2

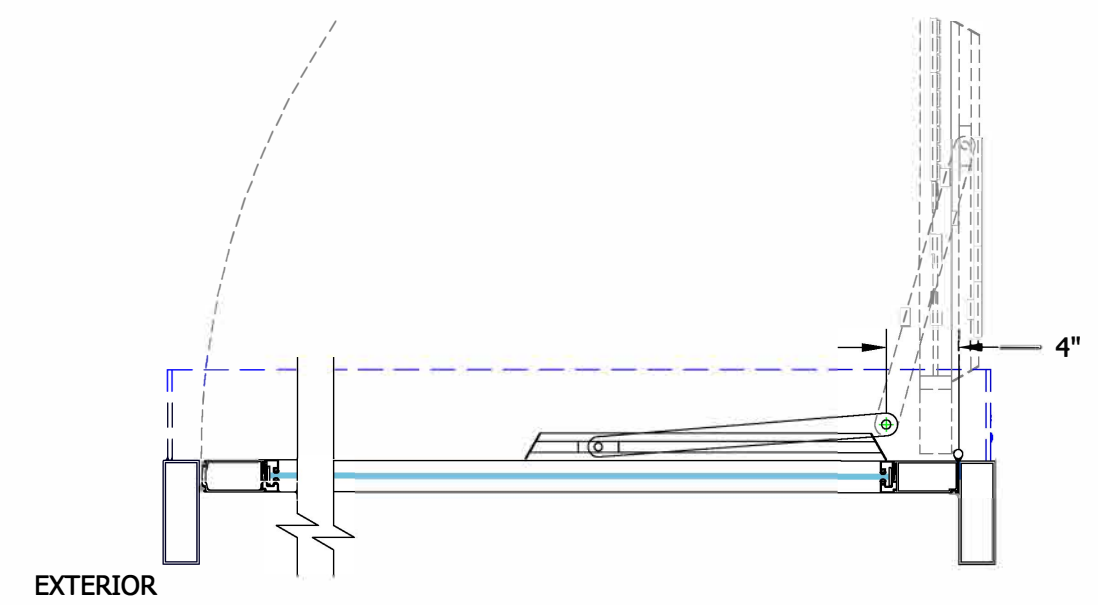
DATE: 04/07/21  
SHEET: CS



- ELECTRIC NOTES:**
- #1. AUTO OPERATOR DRAWS ABOUT 6 AMPS PER PAIR; 3 AMPS PER SINGLE.
  - #2. BRING WIRING TO AREA AT THE BACK OF AUTOMATIC DOOR HEADER, AT LATCH SIDE OF DOOR PANEL.
  - #3. LEAVE 10" WIRING PIGTAIL, FOR CONNECTION TO OPERATOR POWER SUPPLY AND CONTROL.
  - #4. INSTALLERS WILL PULL WIRE PIGTAIL INTO OPERATOR HOUSING DURING INSTALLATION.



R.A.D. PLAN VIEW SHOWS PUSH PLATE LOCATION IN TYPICAL SET-UP; ACTUAL PUSH PLATE LOCATIONS TO VARY BASED ON ARCH PLANS AND/OR SITE CONDITIONS

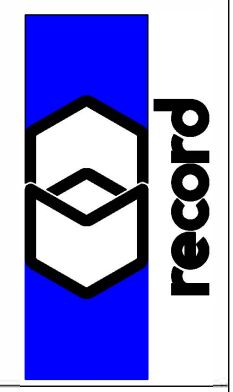


- NOTES:**
- \*ANY NOTE OF "EXTERIOR" IS FOR NOTATION OF DOOR ORIENTATION, FOR REFERENCE OF OPERATOR & PUSH PLATE LOCATION, DOOR SWING, ETC
1. 120V AC, 15A, 60Hz, SINGLE PHASE WIRING TO HEADER; BY OTHERS.
  2. LOW VOLTAGE WIRING TO ALL ASSOCIATED DEVICES BY OTHERS.
  3. ALL WIRING TO BE FINISHED BEFORE INSTALLERS ARRIVE ON SITE.
  4. ALL DOORS, FRAMES, AND REMAINING DOOR HARDWARE; BY OTHERS.
  5. WITH ONE (1) BORDTEK BWC01-KIT-CDN, WASHROOM KIT, FOR OPERATOR ACTIVATION AND WASHROOM SECURITY.
    - ELECTRONIC STRIKE TO LOCK & SECURE DOOR; BY OTHERS
  6. WITH THREE-WAY ROCKER SWITCH FOR MODE SELECTION, MOUNTED IN OPERATOR HEADER END CAP.
    - AUTO/OFF/HOLD OPEN MODES
  7. WITH INTEGRATION OF OPERATOR CONTROL, TO ANY ACCESS CONTROL DEVICES, IN OPERATOR HEADER.
    - ANY ACCESS CONTROL DEVICES, AND ALL WIRING FROM DEVICES TO HEADER; BY OTHERS.
  8. OPERATORS TO BE SET-UP ACCORDING TO ANY SPECIFIED ORDER OF OPERATION IN HARDWARE SCHEDULE/SPEC.
  9. FOR DOORS: D31

**GENERAL COMMENT:**  
D31: HOLLOW METAL DOOR - REFER TO DOOR SCHEDULE

1016 Sutton Drive  
Unit C10  
Burlington, ON L7L 6B8  
T: 905-632-2235  
T: 855-777-2235  
F: 905-632-4620

**record  
automatic  
doors, inc**



RECORD-USA SERIES 6100  
SWING DOOR OPERATOR  
RH SWING

DESCRIPTION:

QTY: 1

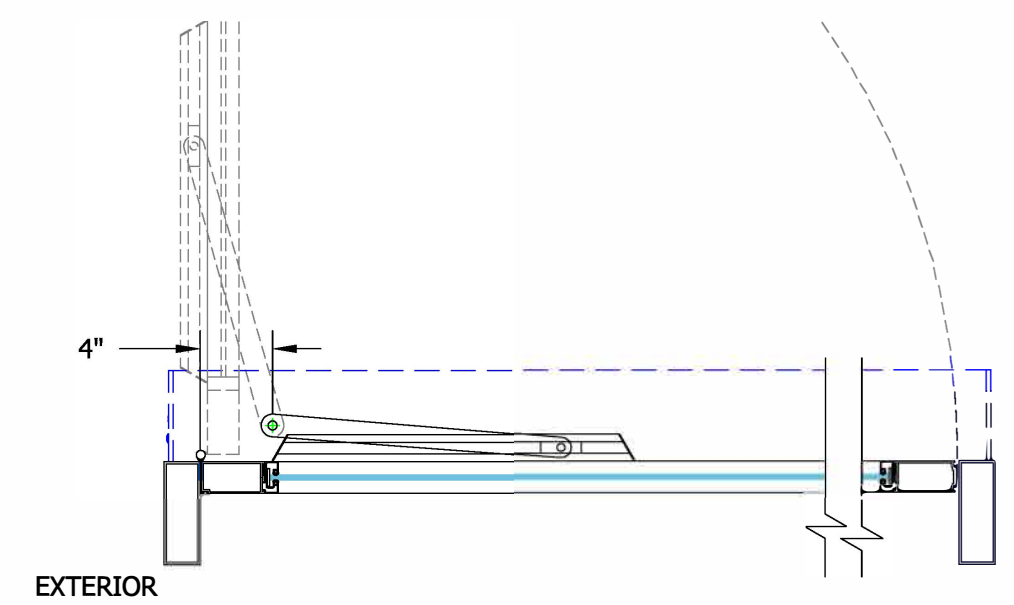
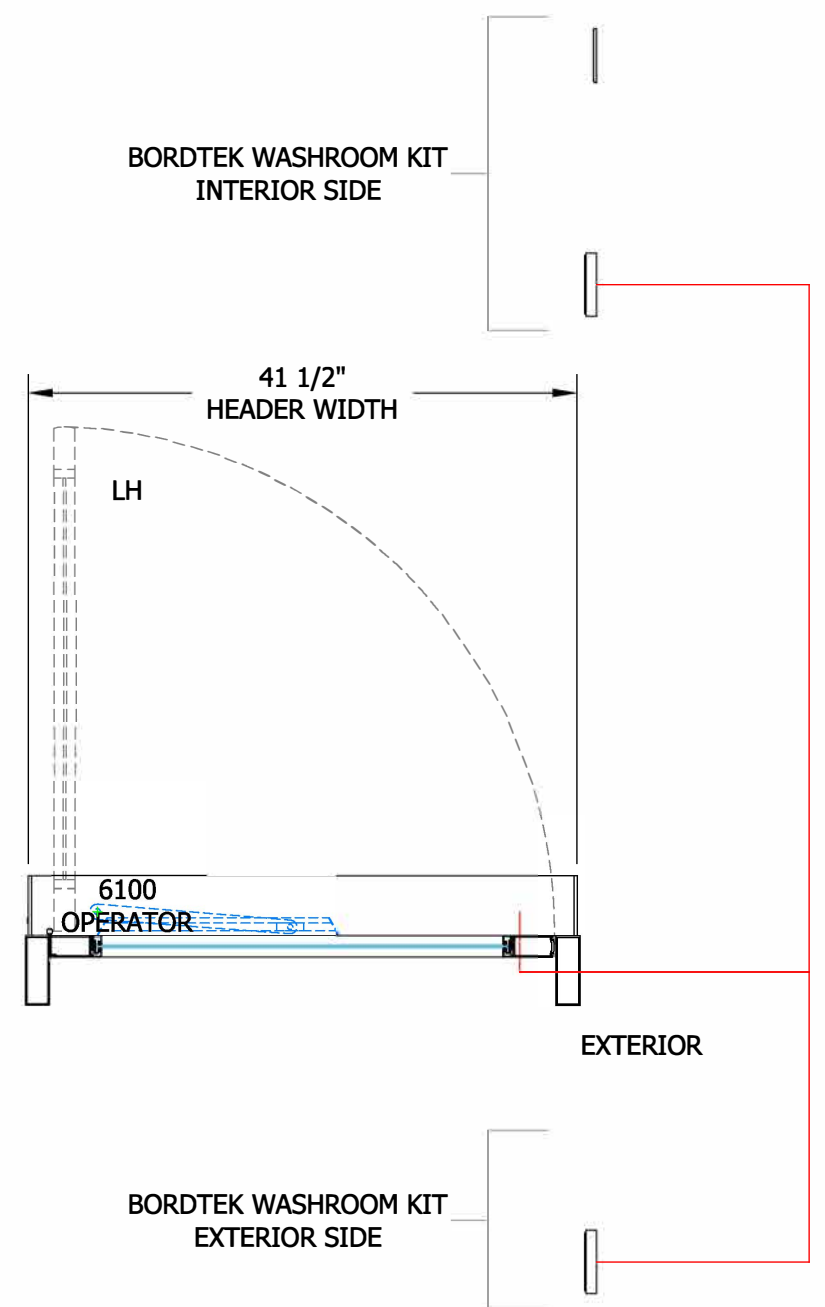
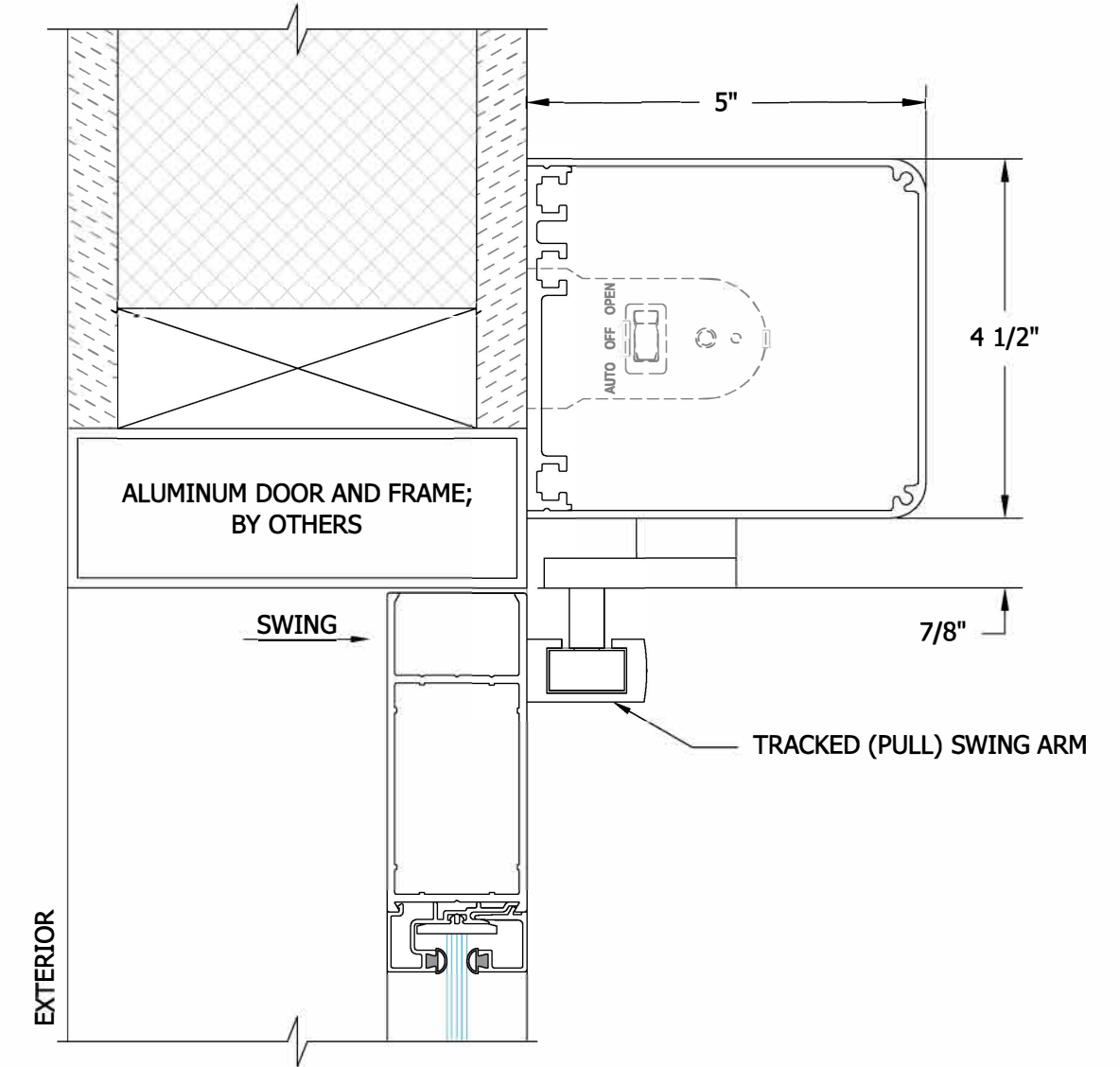
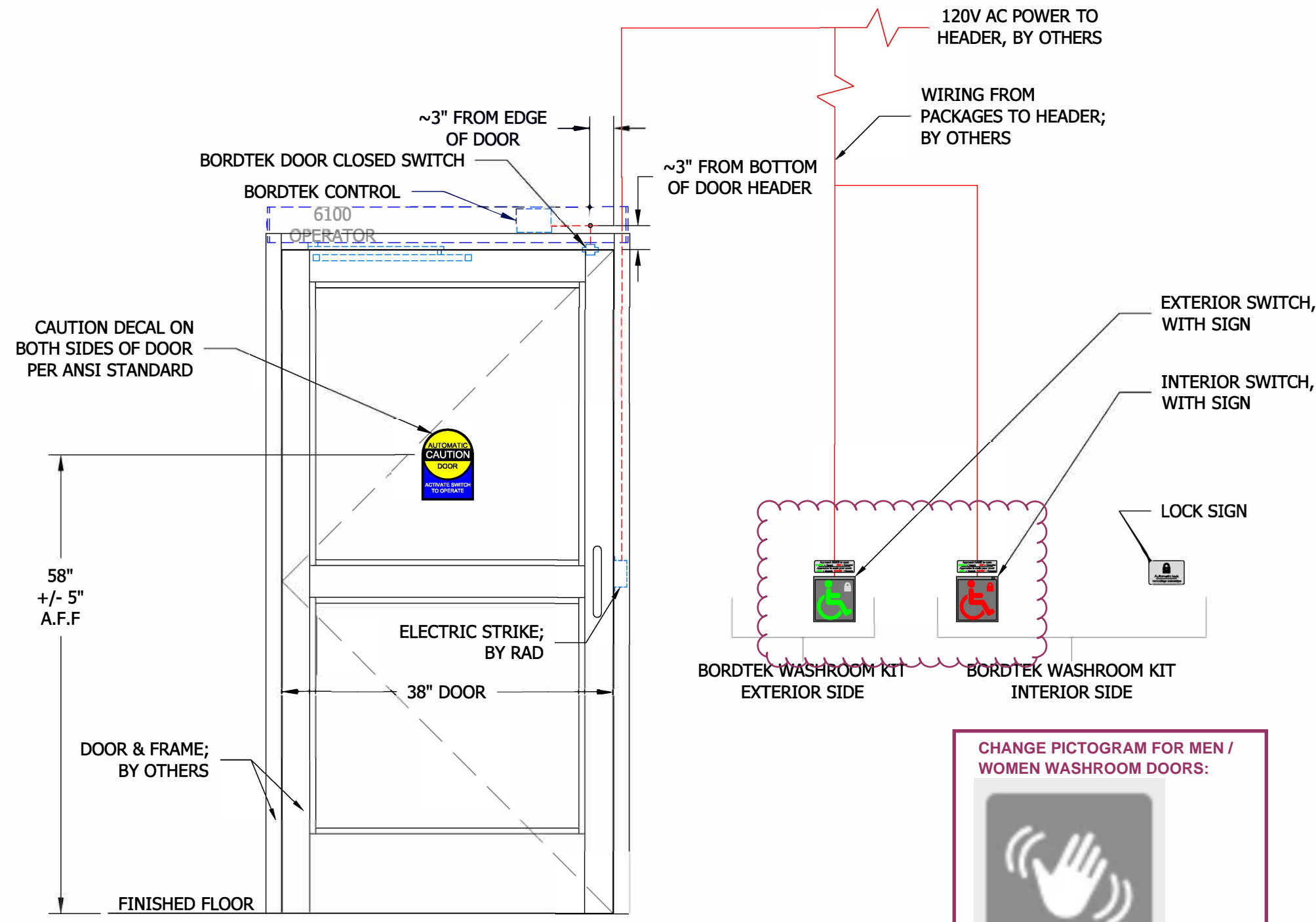
MANUFACTURER: RECORD-USA  
MODEL: 6105  
FINISH: CLEAR [CLASS II]  
ANIDIZED

PROJECT NAME/ADDRESS:	BMO - BEACHLANDS	SCALE:	N/A
REVISION DATE:	2	SIZE:	ANSI C
DATE:	04/07/21	S.A.:	SMW
REVISION:	2	CHECKED BY:	SMW
SHEET:	1	DRAWN:	SMW

- ELECTRIC NOTES:**
- #1. AUTO OPERATOR DRAWS ABOUT 6 AMPS PER PAIR; 3 AMPS PER SINGLE.
  - #2. BRING WIRING TO AREA AT THE BACK OF AUTOMATIC DOOR HEADER, AT LATCH SIDE OF DOOR PANEL.
  - #3. LEAVE 10" WIRING PIGTAIL, FOR CONNECTION TO OPERATOR POWER SUPPLY AND CONTROL.
  - #4. INSTALLERS WILL PULL WIRE PIGTAIL INTO OPERATOR HOUSING DURING INSTALLATION.

- NOTES:**
- \*ANY NOTE OF "EXTERIOR" IS FOR NOTATION OF DOOR ORIENTATION, FOR REFERENCE OF OPERATOR & PUSH PLATE LOCATION, DOOR SWING, ETC
1. 120V AC, 15A, 60Hz, SINGLE PHASE WIRING TO HEADER; BY OTHERS.
  2. LOW VOLTAGE WIRING TO ALL ASSOCIATED DEVICES BY OTHERS.
  3. ALL WIRING TO BE FINISHED BEFORE INSTALLERS ARRIVE ON SITE.
  4. ALL DOORS, FRAMES, AND REMAINING DOOR HARDWARE; BY OTHERS.
  5. WITH ONE (1) BORDTEK BWC01-KIT-CDN, WASHROOM KIT (WITHOUT EMERGENCY ASSIST), FOR OPERATOR ACTIVATION AND WASHROOM SECURITY.
    - ELECTRONIC STRIKE TO LOCK & SECURE DOOR; BY OTHERS
  6. WITH THREE-WAY ROCKER SWITCH FOR MODE SELECTION, MOUNTED IN OPERATOR HEADER END CAP.
    - AUTO/OFF/HOLD OPEN MODES
  7. WITH INTEGRATION OF OPERATOR CONTROL, TO ANY ACCESS CONTROL DEVICES, IN OPERATOR HEADER.
    - ANY ACCESS CONTROL DEVICES, AND ALL WIRING FROM DEVICES TO HEADER; BY OTHERS.
  8. OPERATORS TO BE SET-UP ACCORDING TO ANY SPECIFIED ORDER OF OPERATION IN HARDWARE SCHEDULE/SPEC.
  9. FOR DOORS: D29; D30

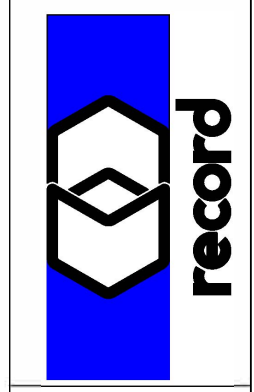
**GENERAL COMMENT:**  
D29 / D30: HOLLOW METAL DOOR - REFER TO DOOR SCHEDULE



R.A.D. PLAN VIEW SHOWS PUSH PLATE LOCATION IN TYPICAL SET-UP; ACTUAL PUSH PLATE LOCATIONS TO VARY BASED ON ARCH PLANS AND/OR SITE CONDITIONS

1016 Sutton Drive  
Unit C10  
Burlington, ON L7L 6B8  
T: 905-632-2235  
T: 855-777-2235  
F: 905-632-4620

**record  
automatic  
doors, inc**



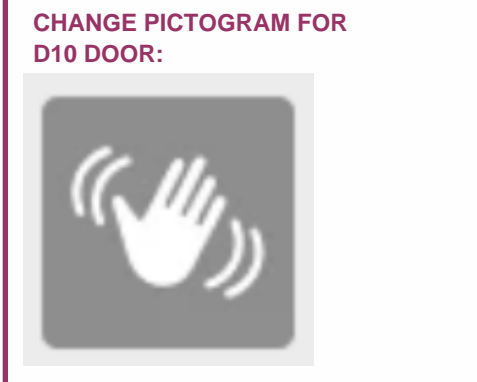
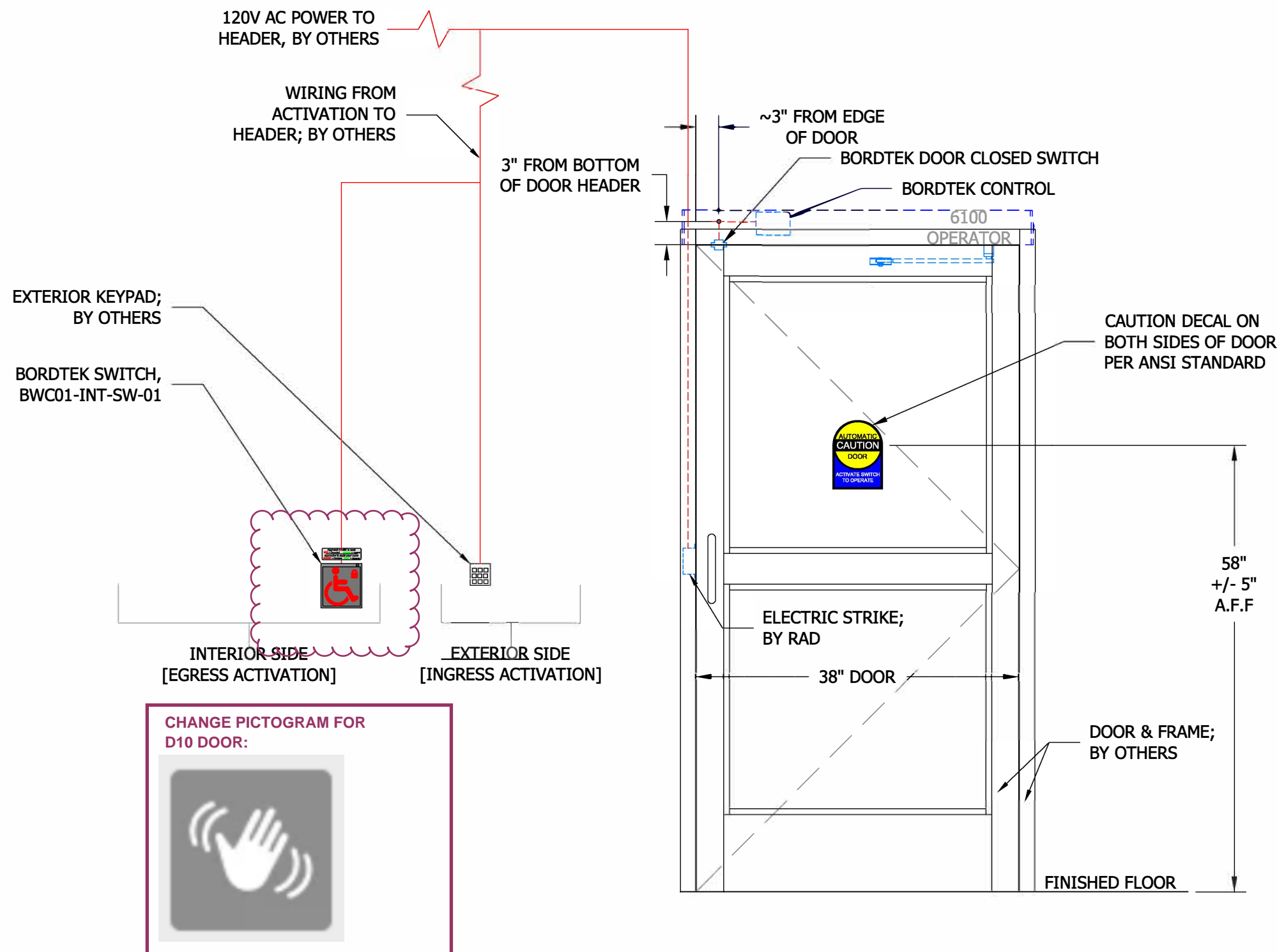
RECORD-USA SERIES 6100  
SWING DOOR OPERATOR  
LH SWING  
QTY: 2

MANUFACTURER: RECORD-USA  
MODEL: 6104  
FINISH: CLEAR [CLASS II]  
ANIDIZED

PROJECT NAME ADDRESS:	BMO - BEACHLANDS	CHECKED BY:	SMW	SCALE:	N/A
REVISION DATE:	2	SIZE:	ANSI C	REVISION:	2
DATE:	04/07/21	S.A.:		SHEET:	2

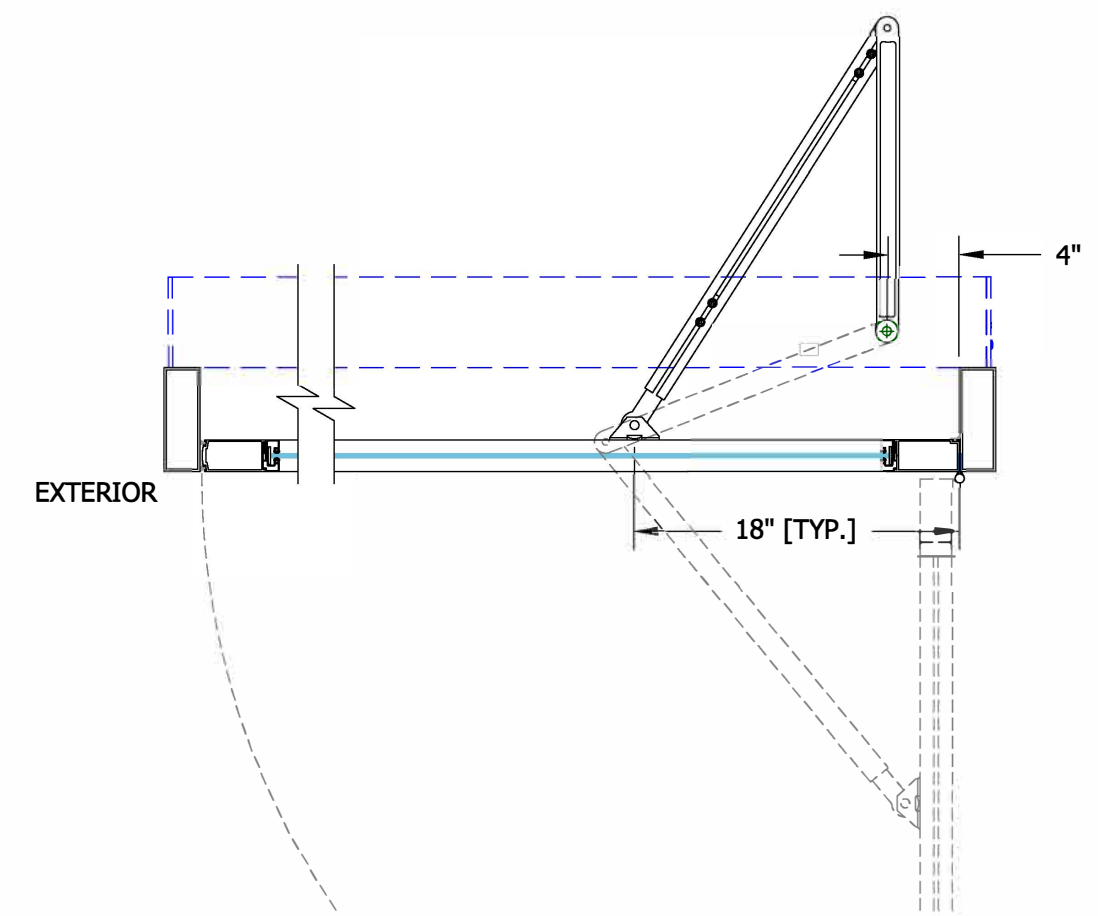
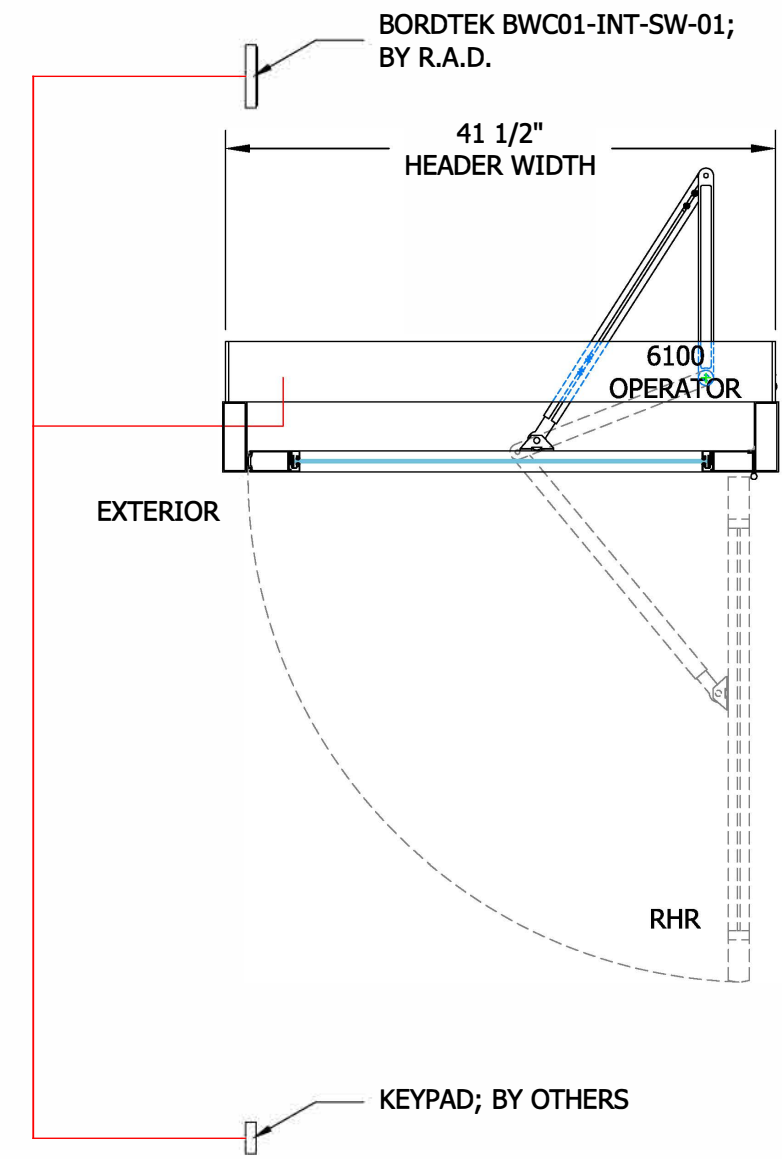
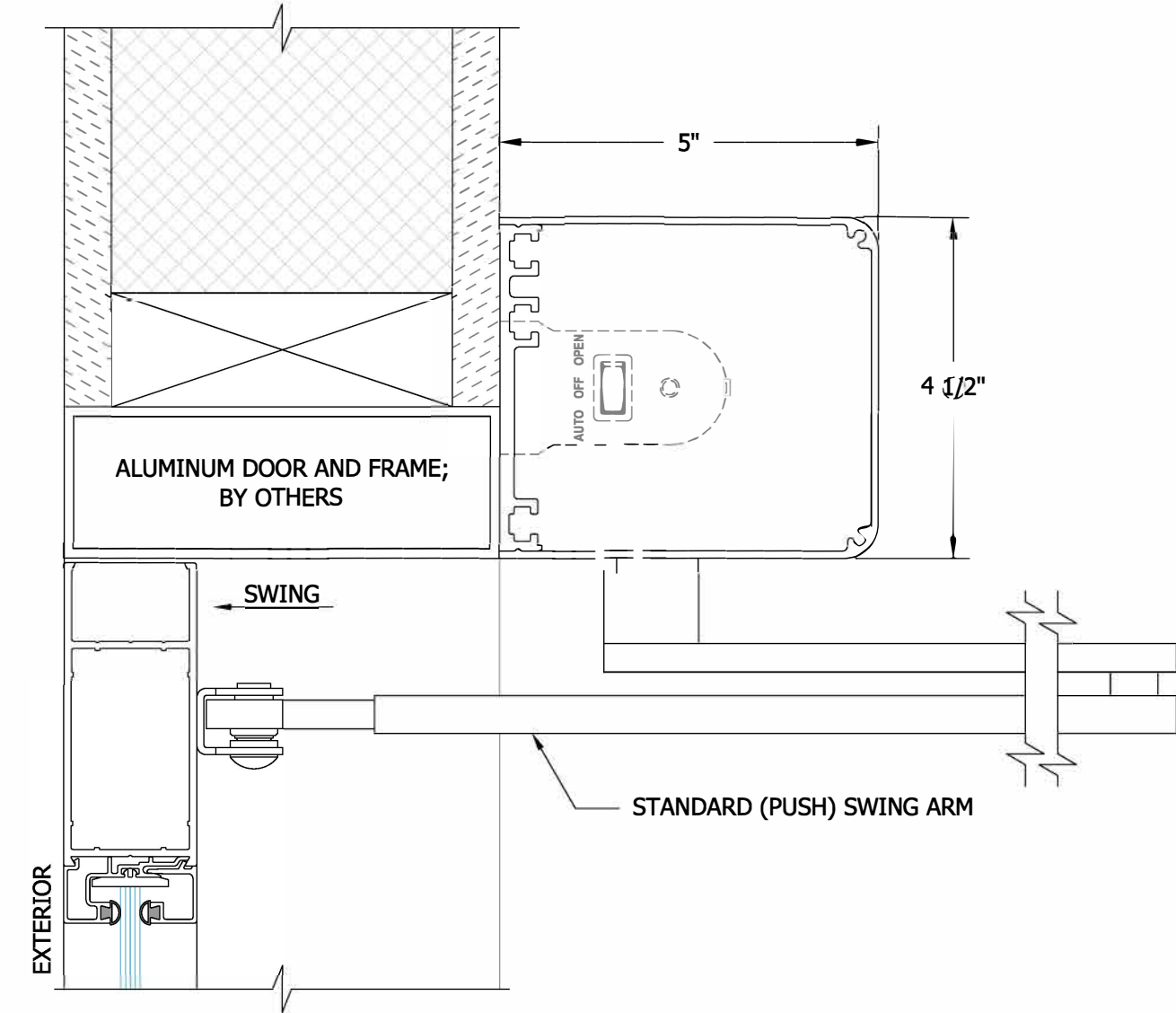


- ELECTRIC NOTES:**
- #1. AUTO OPERATOR DRAWS ABOUT 6 AMPS PER PAIR; 3 AMPS PER SINGLE.
  - #2. BRING WIRING TO AREA AT THE BACK OF AUTOMATIC DOOR HEADER, AT LATCH SIDE OF DOOR PANEL.
  - #3. LEAVE 10" WIRING PIGTAIL, FOR CONNECTION TO OPERATOR POWER SUPPLY AND CONTROL.
  - #4. INSTALLERS WILL PULL WIRE PIGTAIL INTO OPERATOR HOUSING DURING INSTALLATION.



- NOTES:**
- \*ANY NOTE OF "EXTERIOR" IS FOR NOTATION OF DOOR ORIENTATION, FOR REFERENCE OF OPERATOR & PUSH PLATE LOCATION, DOOR SWING, ETC
1. 120V AC, 15A, 60Hz, SINGLE PHASE WIRING TO HEADER; BY OTHERS.
  2. LOW VOLTAGE WIRING TO ALL ASSOCIATED DEVICES BY OTHERS.
  3. ALL WIRING TO BE FINISHED BEFORE INSTALLERS ARRIVE ON SITE.
  4. ALL DOORS, FRAMES, AND REMAINING DOOR HARDWARE; BY OTHERS.
  5. WITH ONE (1) BORDTEK BWC01-INT-SW-01, ACTIVATION SWITCH, FOR INTERIOR [EGRESS] OPERATOR ACTIVATION.
    - KEYPAD FOR EXTERIOR [INGRESS] ACTIVATION; BY OTHERS
  6. WITH THREE-WAY ROCKER SWITCH FOR MODE SELECTION, MOUNTED IN OPERATOR HEADER END CAP.
    - AUTO/OFF/HOLD OPEN MODES
  7. WITH INTEGRATION OF OPERATOR CONTROL, TO ANY ACCESS CONTROL DEVICES, IN OPERATOR HEADER.
    - ANY ACCESS CONTROL DEVICES, AND ALL WIRING FROM DEVICES TO HEADER; BY OTHERS.
  8. OPERATORS TO BE SET-UP ACCORDING TO ANY SPECIFIED ORDER OF OPERATION IN HARDWARE SCHEDULE/SPEC.
  9. FOR DOORS: D10

**GENERAL COMMENT:**  
D10: HOLLOW METAL DOOR - REFER TO DOOR SCHEDULE



R.A.D. PLAN VIEW SHOWS PUSH PLATE LOCATION IN TYPICAL SET-UP; ACTUAL PUSH PLATE LOCATIONS TO VARY BASED ON ARCH PLANS AND/OR SITE CONDITIONS

1016 Sutton Drive  
Unit C10  
Burlington, ON L7L 6B8  
T: 905-632-2235  
T: 855-777-2235  
F: 905-632-4620

**record automatic doors, inc**

RECORD-USA SERIES 6100 SWING DOOR OPERATOR RHR SWING

DESCRIPTION: RECORD-USA 6100 MODEL: CLEAR [CLASS II] ANIDIZED FINISH: N/A SCALE: ANST C SIZE: S.A. CHECKED BY: SMW DRAWN: 2

PROJECT NAME ADDRESS: BMO - BEACHLANDS

REVISION DATE: 2 SHEET: 3

DATE: 04/07/21 SHEET: 3